



STONEPLY

real stone real strong real thin

CASE STUDY

UCSD CANCER CENTER
STONEPLY STONE CLADDING



THE CHALLENGE

- How do you make stone cladding a fast, modular process?
- How do you minimize disruption of the existing health care campus while building new facilities?
- These were the challenges that faced the UCSD and RAD Technology who wanted to clad the new facility with limestone.

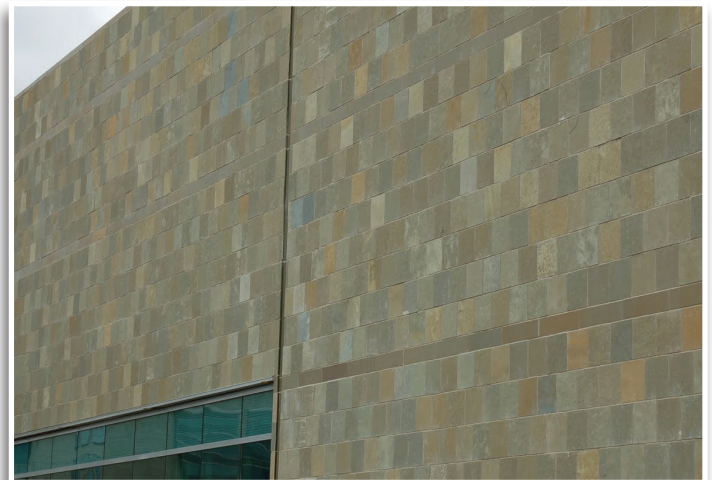
The owners and installers liked the idea of “quality control and high strength that the factory panelized stone cladding system offered”.

Stone is a beautiful and long lasting exterior cladding, but can be slow to install.

The designers and constructors of the UCSD facility wanted natural stone but needed fast construction with minimal disruption. They were also looking for a LEED compliant, earthquake resistant material.

“We are all very happy with the building. The stone panels really came out great! Much thanks to you and everyone at StonePly who worked on the project. We also look forward to working with StonePly and Stromberg on future projects.”

Mike Kosinski, Director of Field Operations at RAD Technology Medical Systems



STONEPLY SOLUTION

StonePly supplied and installed limestone panels that provided:

- 60X the impact strength of slab stone
- Installation 6X as fast as hand set stone
- Lightweight recycled aluminum honeycomb backing

Architects and Owners had considered traditionally set limestone but the disruption and time delays that hand setting the cladding would have created made it impractical. They selected StonePly instead. "StonePly offered a lightweight cladding system with numerous advantages in faster fabrication, faster install, much higher strength and far superior seismic resistance."

CASE STUDY:

UCSD CANCER TREATMENT CENTER

PROJECT BACKGROUND

Project Name: UCSD Cancer Treatment Center

Developer: RAD Technology

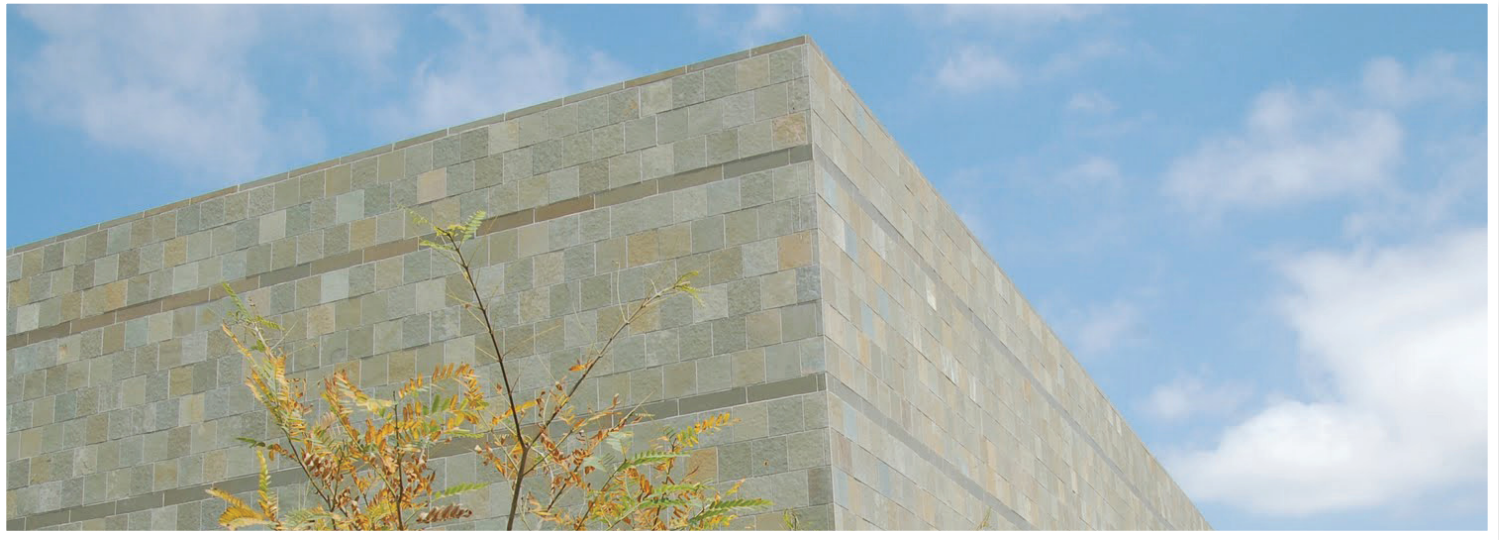
Architect: WBSA

Product: StonePly Kota Limestone



QUALITY AND SPEED

“Quality is very important to UCSD and the architecture and materials used in the construction of the new facilities must uphold that level quality”. The University of California San Diego Medical Center is one of the premier medical and research facilities in the nation. UCSD is recognized by the National Cancer Institute as one of an elite group of Comprehensive Cancer Centers in the nation. Recently ranked among the nation’s top research medical schools by U.S. News and World Report, and named among the nation’s best hospitals in eight different specialties, UCSD Medical Center has a history and commitment to excellence. The owners and installers liked the idea of “quality control and high strength that the factory panelized stone cladding system offered”.



THE STONEPLY PROCESS

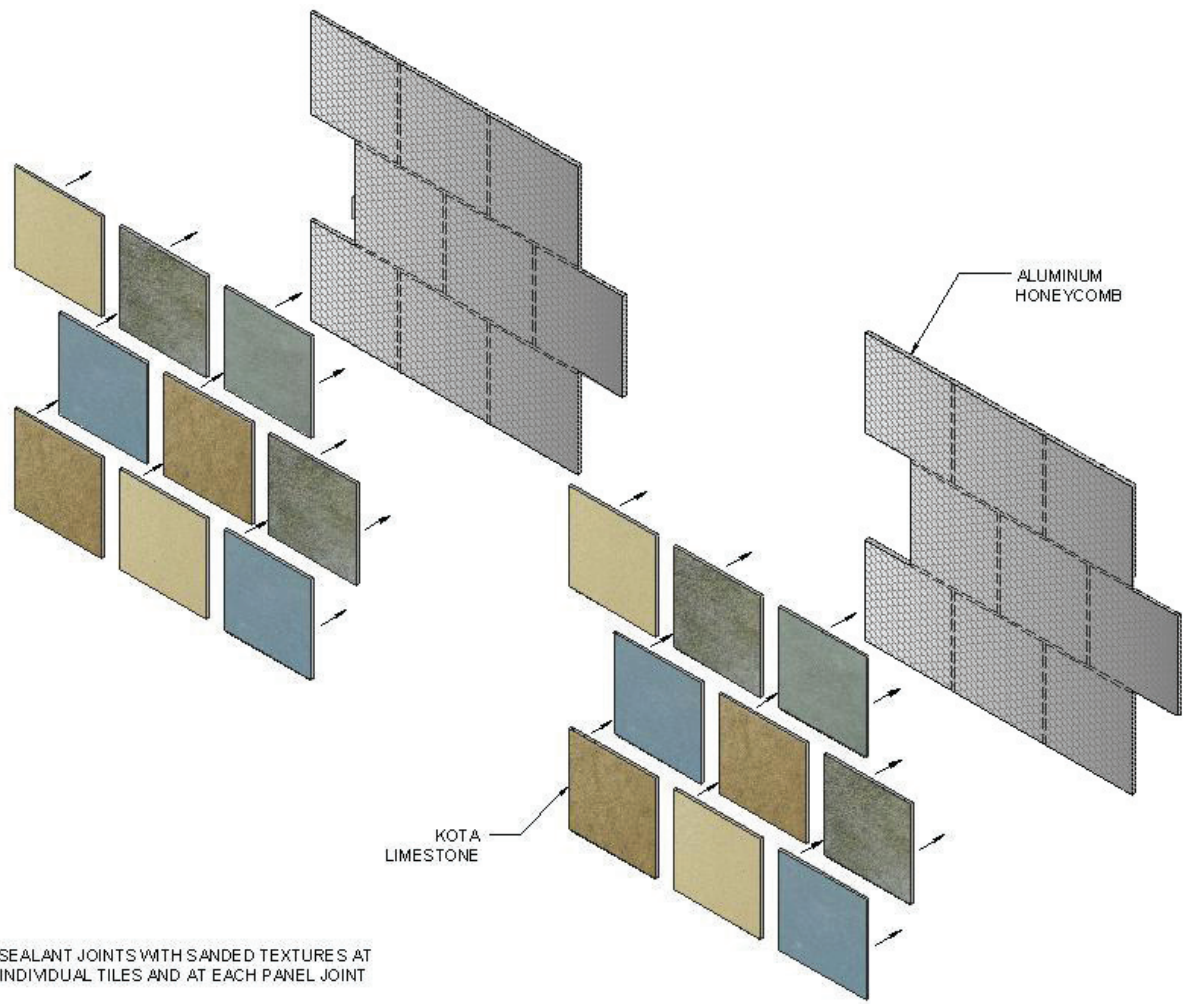
StonePly met these needs with 60 times the impact resistance of slab stone, a recycled aluminum honeycomb backing and pre fabricated panels. Kota Limestone from India was shipped to StonePly's Texas plant where it was bonded to aluminum honeycomb backing panels. The panels were manufactured with interlocking ends. This allowed the stone panels to be erected with the panel ends “saw toothed” together to avoid straight vertical joints. Installation was accomplished 5 times faster than a traditional stone installation would have taken.

PROJECT PROFILE

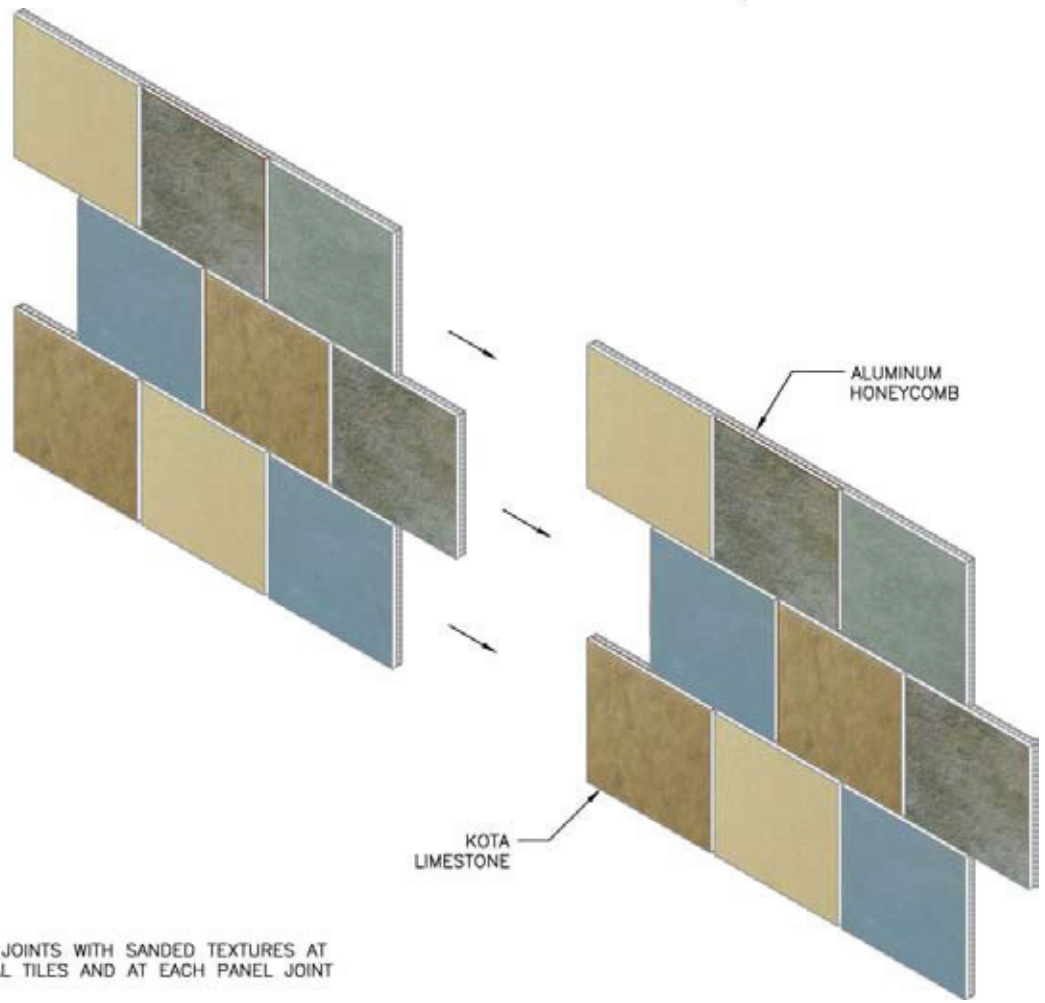
- The project consists of a cancer treatment building exterior cladding, window surrounds and soffit
- The stone was select Kota limestone quarried in India and fabricated in StonePly's Greenville, Texas factory.
- Installation was by StonePly

NEXT STEP

To see additional photos of the project, or for help with specifications, CAD drawings or mounting details, contact us at StonePly www.stoneply.com or phone (903) 454-4630. We are here to help.



- SEALANT JOINTS WITH SANDED TEXTURES AT INDIVIDUAL TILES AND AT EACH PANEL JOINT



- SEALANT JOINTS WITH SANDED TEXTURES AT INDIVIDUAL TILES AND AT EACH PANEL JOINT